

MISSOURI BANDMASTERS ASSOCIATION

MISSOURI ALL-STATE BAND AUDITION MATERIALS

BASS CLEF BARITONE

Sets I, II, III, IV

Scales: All scales are to be MEMORIZED.

Prepare them all slurred and all tongued in sixteenth notes at quarter note = 88,
Scales should be performed ascending and descending. Scales given are the
starting tone. Do not transpose.

ALL scales are to be prepared from required scale sheet as written.

Chromatic: full range of the instrument
Major Scales: C G D A E F Bb Eb Ab
Melodic Minor Scales: a e b f# c# d g c f

Books: Arban Complete Conservatory Method for Trombone, #023 – Mantia (edited)/Carl Fischer Publication
*Note that newer editions of the Arban book have varied page layouts causing etudes to start on a different page than listed below. Please make sure the etude title corresponds to the designated etude listed below

Set I (2016-2017)	Arban	p. 29	#48
		p. 52	#28
		p. 126	#1 – lines 1, 5, & 11 (Bb, D, Ab)
		p. 202	#142
		p. 211	#6 – first 7 lines (to key change) Moderato / Eb Major
		p. 252	#10 – first 5 lines

Set II (2017-2018)	Arban	p. 29	#49
		p. 40	#31
		p. 61	#69 – lines 2, 10, & 12 (Eb, G, F)
		p. 201	#139
		p. 215	#9 – first 6 lines Allegro / Ab Major
		p. 244	#7 – lines 8, 9, 10, 11, & 12

Set III (2018-2019)	Arban	p. 29	#50
		p. 52	#29
		p. 126	#1 – lines 3, 8, & 12 (C, F, A)
		p. 202	#143
		p. 231	#3 – first 8 lines Brilliant Fantasy / Allegro Maestoso
		p. 225	#1 – lines 8, 9, & 10 (observe repeat)

Set IV (2019-2020)	Arban	p. 28	#47
		p. 31	#9
		p. 61	#69 – lines 3, 9, & 11 (Ab, D, C)
		p. 201	#138
		p. 204	#1 – first 8 lines (to key change)
		p. 236	#5 – lines 5, 6, 7, & 8



MISSOURI ALL-STATE-BAND AUDITION SCALES

to be played at a minimum tempo of quarter note = 88

Euphonium

Chromatic Scale

C Major

a melodic minor

F Major

d melodic minor

Bb Major

g melodic minor

Eb Major

c melodic minor

Trombone continued

Ab Major



f melodic minor



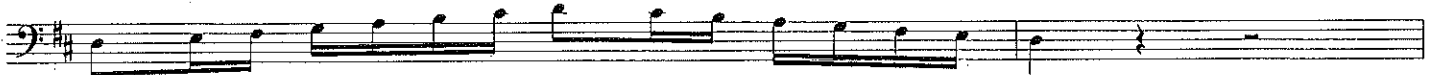
G Major



e melodic minor



D Major



b melodic minor



A Major



f# melodic minor



E Major



c# melodic minor

