



MISSOURI ALL-STATE-BAND AUDITION SCALES

to be played at a minimum tempo of quarter note = 88

Flute

Chromatic Scale

The chromatic scale is written on three staves in 3/4 time. The first staff shows the ascending scale from C4 to C5. The second staff shows the descending scale from C5 to C4. The notes are: C4, C#4, D4, D#4, E4, E#4, F4, F#4, G4, G#4, A4, A#4, B4, B#4, C5, C5, B5, B#5, A5, A#5, G5, G#5, F5, F#5, E5, E#5, D5, D#5, C5.

Missouri ASB Major Scales

C Major Scale

The C major scale is written on a single staff in 4/4 time. It consists of two phrases: an ascending phrase and a descending phrase. The notes are: C4, D4, E4, F4, G4, A4, B4, C5, B4, A4, G4, F4, E4, D4, C4.

G Major Scale

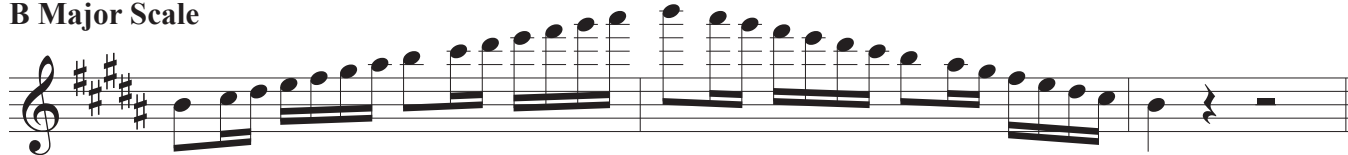
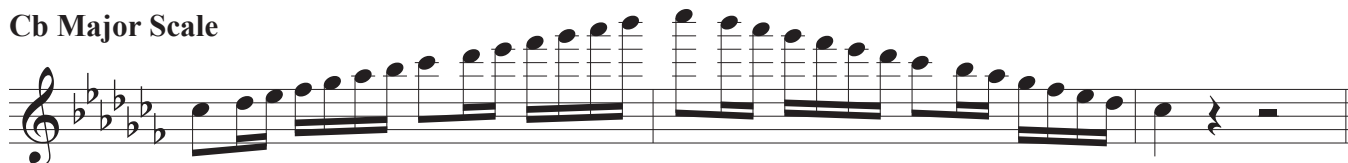
The G major scale is written on a single staff in 4/4 time. It consists of two phrases: an ascending phrase and a descending phrase. The notes are: G4, A4, B4, C5, D5, E5, F#5, G5, F#5, E5, D5, C5, B4, A4, G4.

D Major Scale

The D major scale is written on a single staff in 4/4 time. It consists of two phrases: an ascending phrase and a descending phrase. The notes are: D4, E4, F#4, G4, A4, B4, C#5, D5, C#5, B4, A4, G4, F#4, E4, D4.

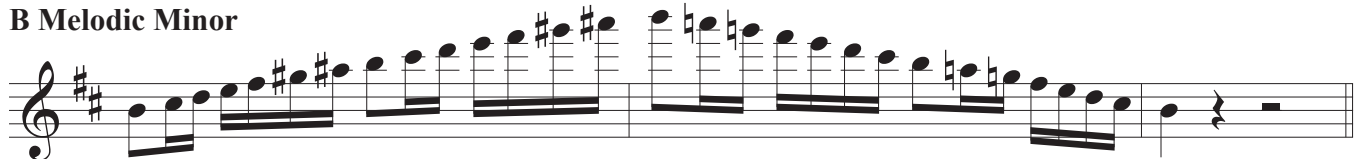
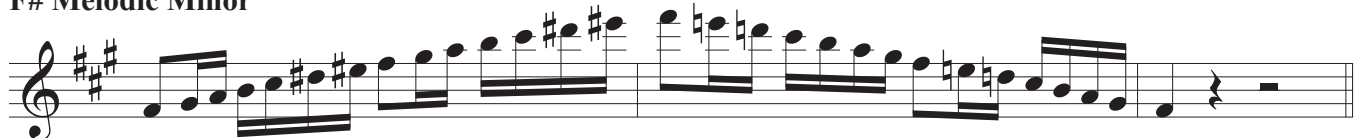
A Major Scale

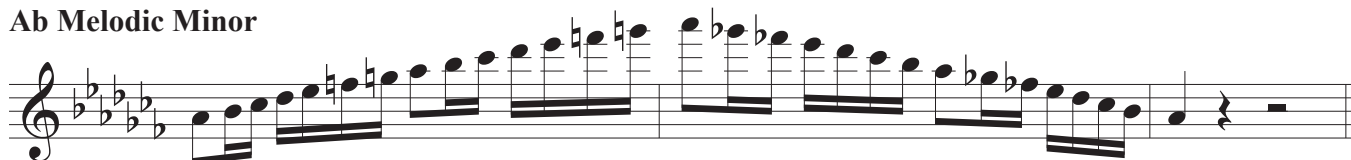
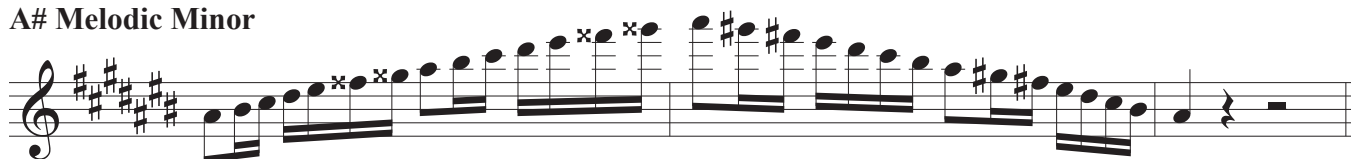
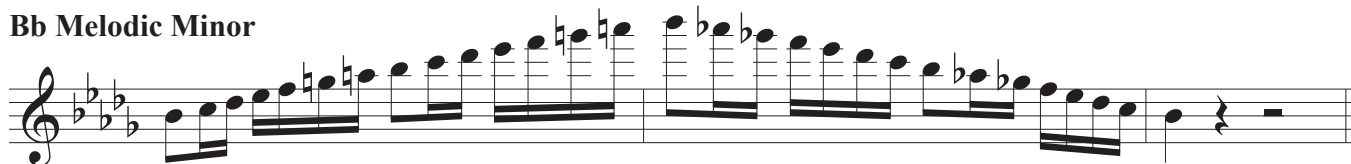
The A major scale is written on a single staff in 4/4 time. It consists of two phrases: an ascending phrase and a descending phrase. The notes are: A4, B4, C#5, D5, E5, F#5, G#5, A5, G#5, F#5, E5, D5, C#5, B4, A4.

E Major Scale**B Major Scale****Cb Major Scale****F# Major Scale****Gb Major Scale****C# Major Scale****Db Major Scale****Ab Major Scale**

E \flat Major Scale**B \flat Major Scale****F Major Scale**

Missouri ASB Melodic Minor Scales

A Melodic Minor**E Melodic Minor****B Melodic Minor****F \sharp Melodic Minor**

C# Melodic Minor**G# Melodic Minor****Ab Melodic Minor****D# Melodic Minor****Eb Melodic Minor****A# Melodic Minor****Bb Melodic Minor****F Melodic Minor**

C Melodic Minor**G Melodic Minor****D Melodic Minor**