



# MISSOURI ALL-STATE-BAND AUDITION SCALES

to be played at a minimum tempo of quarter note = 88

E♭ Contra Alto Clarinet

## Chromatic Scale

Musical notation for a chromatic scale in 3/4 time. The scale is written on a single staff in treble clef. It consists of two lines of music. The first line contains the ascending chromatic scale from C2 to B♭7. The second line contains the descending chromatic scale from B♭7 to C2. The notes are: C, C♯, D, D♯, E, E♯, F, F♯, G, G♯, A, A♯, B, B♯, C, B, B♭, A, A♭, G, G♭, F, F♭, E, E♭, D, D♭, C, B, B♭, A, A♭, G, G♭, F, F♭, E, E♭, D, D♭, C.

## Missouri ASB Major Scales

### C Major Scale

Musical notation for the C Major Scale in 4/4 time. The scale is written on a single staff in treble clef. It consists of two lines of music. The first line contains the ascending scale: C, D, E, F, G, A, B, C. The second line contains the descending scale: B, A, G, F, E, D, C. The notes are: C, D, E, F, G, A, B, C, B, A, G, F, E, D, C.

### G Major Scale

Musical notation for the G Major Scale in 4/4 time. The scale is written on a single staff in treble clef with one sharp (F#). It consists of two lines of music. The first line contains the ascending scale: G, A, B, C, D, E, F#, G. The second line contains the descending scale: F#, E, D, C, B, A, G. The notes are: G, A, B, C, D, E, F#, G, F#, E, D, C, B, A, G.

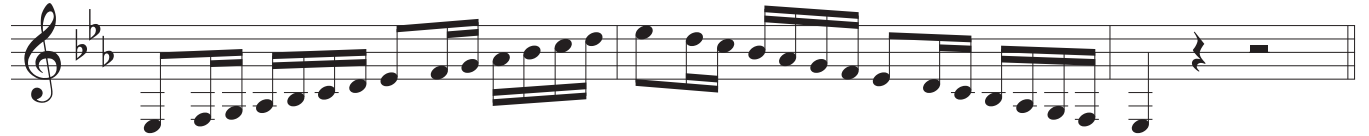
### D Major Scale

Musical notation for the D Major Scale in 4/4 time. The scale is written on a single staff in treble clef with two sharps (F# and C#). It consists of two lines of music. The first line contains the ascending scale: D, E, F#, G, A, B, C#, D. The second line contains the descending scale: C#, B, A, G, F#, E, D. The notes are: D, E, F#, G, A, B, C#, D, C#, B, A, G, F#, E, D.

### A Major Scale

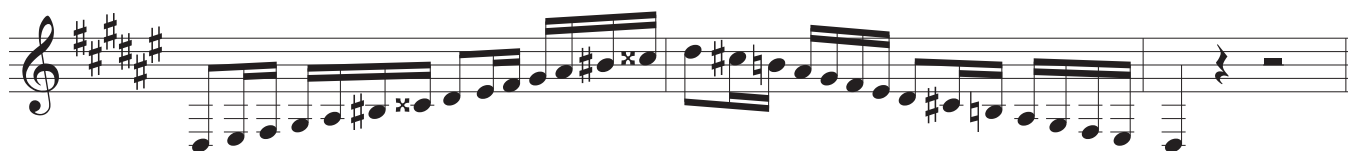
Musical notation for the A Major Scale in 4/4 time. The scale is written on a single staff in treble clef with three sharps (F#, C#, and G#). It consists of two lines of music. The first line contains the ascending scale: A, B, C#, D, E, F#, G#, A. The second line contains the descending scale: G#, F#, E, D, C#, B, A. The notes are: A, B, C#, D, E, F#, G#, A, G#, F#, E, D, C#, B, A.

**E Major Scale****B Major Scale****Cb Major Scale****F# Major Scale****Gb Major****C# Major Scale****Db Major Scale**

**Ab Major Scale****Eb Major Scale****Bb Major Scale****F Major Scale**

## Missouri ASB Melodic Minor Scales

**A Melodic Minor****E Melodic Minor**

**B Melodic Minor****F# Melodic Minor****C# Melodic Minor****G# Melodic Minor****A $\flat$  Melodic Minor****D# Melodic Minor****E $\flat$  Melodic Minor**

**A# Melodic Minor****Bb Melodic Minor****F Melodic Minor****C Melodic Minor****G Melodic Minor****D Melodic Minor**