



MISSOURI ALL-STATE-BAND AUDITION SCALES

to be played at a minimum tempo of quarter note = 88

E♭ Alto Clarinet

Chromatic Scale

The chromatic scale is written in treble clef with a 3/4 time signature. It consists of three lines of music. The first line shows the ascending scale from C4 to C5. The second line shows the descending scale from C5 to C4. The third line shows the descending scale from B3 to B0. All notes are quarter notes.

Missouri ASB Major Scales

C Major Scale

The C Major scale is written in treble clef with a 4/4 time signature. It consists of a single line of music showing the ascending and descending scales from C4 to C5. All notes are quarter notes.

G Major Scale

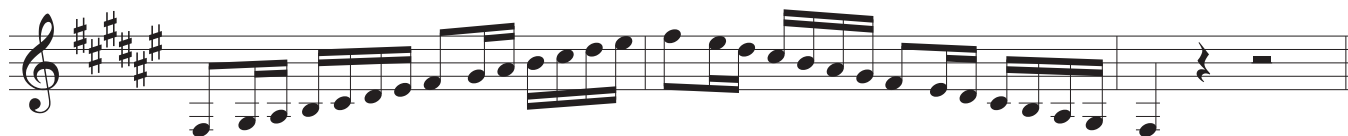
The G Major scale is written in treble clef with a 4/4 time signature. It consists of a single line of music showing the ascending and descending scales from G4 to G5. All notes are quarter notes.

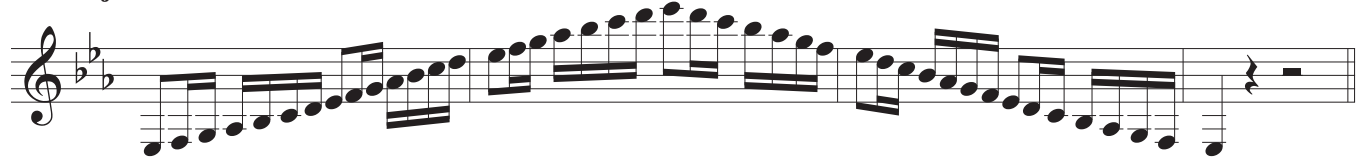
D Major Scale

The D Major scale is written in treble clef with a 4/4 time signature. It consists of a single line of music showing the ascending and descending scales from D4 to D5. All notes are quarter notes.

A Major Scale

The A Major scale is written in treble clef with a 4/4 time signature. It consists of a single line of music showing the ascending and descending scales from A4 to A5. All notes are quarter notes.

E Major Scale**B Major Scale****Cb Major Scale****F# Major Scale****Gb Major****C# Major Scale****Db Major Scale**

Ab Major Scale**Eb Major Scale****Bb Major Scale****F Major Scale**

Missouri ASB Melodic Minor Scales

A Melodic Minor**E Melodic Minor**

B Melodic Minor



Musical notation for the B Melodic Minor scale. The scale is written on a treble clef staff with a key signature of two sharps (F# and C#). The notes are B, C, D, E, F#, G#, A, B, ascending and B, A, G, F, E, D, C, B, descending. The piece concludes with a double bar line.

F# Melodic Minor



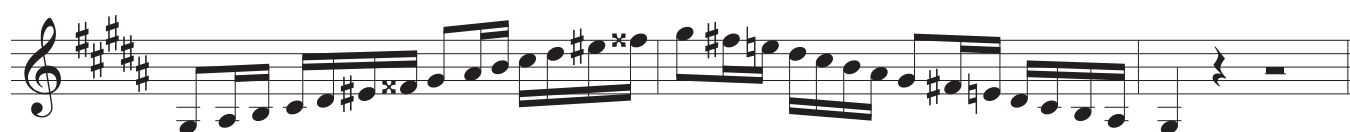
Musical notation for the F# Melodic Minor scale. The scale is written on a treble clef staff with a key signature of three sharps (F#, C#, G#). The notes are F#, G, A, B, C, D, E, F#, ascending and F#, E, D, C, B, A, G, F#, descending. The piece concludes with a double bar line.

C# Melodic Minor



Musical notation for the C# Melodic Minor scale. The scale is written on a treble clef staff with a key signature of four sharps (F#, C#, G#, D#). The notes are C#, D, E, F#, G, A, B, C#, ascending and C#, B, A, G, F, E, D, C#, descending. The piece concludes with a double bar line.

G# Melodic Minor



Musical notation for the G# Melodic Minor scale. The scale is written on a treble clef staff with a key signature of five sharps (F#, C#, G#, D#, A#). The notes are G#, A, B, C, D, E, F#, G#, ascending and G#, F#, E, D, C, B, A, G#, descending. The piece concludes with a double bar line.

A \flat Melodic Minor



Musical notation for the A \flat Melodic Minor scale. The scale is written on a treble clef staff with a key signature of three flats (B \flat , E \flat , A \flat). The notes are A \flat , B \flat , C, D, E \flat , F, G, A \flat , ascending and A \flat , G, F, E \flat , D, C, B \flat , A \flat , descending. The piece concludes with a double bar line.

D# Melodic Minor



Musical notation for the D# Melodic Minor scale. The scale is written on a treble clef staff with a key signature of six sharps (F#, C#, G#, D#, A#, E#). The notes are D#, E, F#, G, A, B, C, D#, ascending and D#, C, B, A, G, F#, E, D#, descending. The piece concludes with a double bar line.

E \flat Melodic Minor



Musical notation for the E \flat Melodic Minor scale. The scale is written on a treble clef staff with a key signature of four flats (B \flat , E \flat , A \flat , D \flat). The notes are E \flat , F, G, A, B \flat , C, D, E \flat , ascending and E \flat , D, C, B \flat , A, G, F, E \flat , descending. The piece concludes with a double bar line.

A# Melodic Minor**Bb Melodic Minor****F Melodic Minor****C Melodic Minor****G Melodic Minor****D Melodic Minor**