



MISSOURI ALL-STATE-BAND AUDITION SCALES

to be played at a minimum tempo of quarter note = 88

Bb Soprano Clarinet

Chromatic Scale

The chromatic scale is written on three staves in 3/4 time. The first staff contains the first octave (C4 to C5), the second staff contains the second octave (C5 to C6), and the third staff contains the third octave (C6 to C7). The notes are played in a continuous, ascending and then descending sequence, with sharp and flat accidentals used to indicate the chromatic movement between adjacent half-steps.

Missouri ASB Major Scales

C Major Scale

The C major scale is written on a single staff in 4/4 time. It consists of eight measures: four measures of ascending eighth notes and four measures of descending eighth notes, ending with a whole rest.

G Major Scale

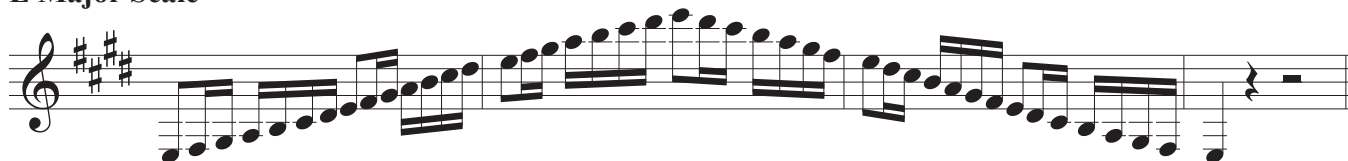
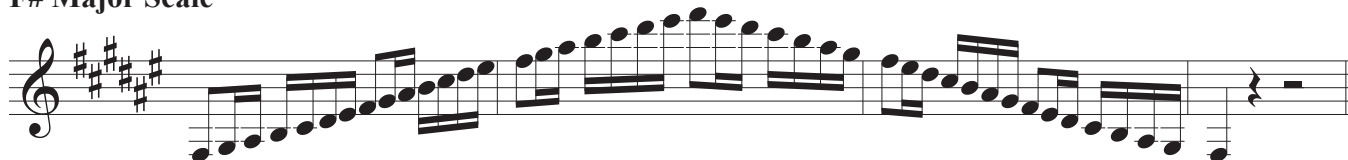
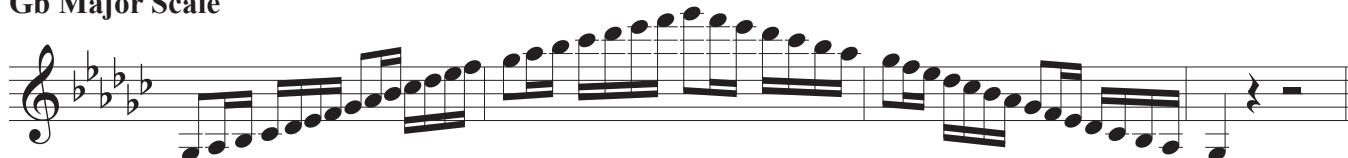
The G major scale is written on a single staff in 4/4 time. It consists of eight measures: four measures of ascending eighth notes and four measures of descending eighth notes, ending with a whole rest. The key signature has one sharp (F#).

D Major Scale

The D major scale is written on a single staff in 4/4 time. It consists of eight measures: four measures of ascending eighth notes and four measures of descending eighth notes, ending with a whole rest. The key signature has two sharps (F# and C#).

A Major Scale

The A major scale is written on a single staff in 4/4 time. It consists of eight measures: four measures of ascending eighth notes and four measures of descending eighth notes, ending with a whole rest. The key signature has three sharps (F#, C#, and G#).

E Major Scale**B Major Scale****Cb Major Scale****F# Major Scale****Gb Major Scale****C# Major Scale****Db Major Scale****Ab Major Scale**

E_b Major Scale**B_b Major Scale****F Major Scale**

Missour ASB Melodic Minor Scales

A Melodic Minor**E Melodic Minor****B Melodic Minor**

F# Melodic Minor

Musical notation for the F# Melodic Minor scale, consisting of two staves. The first staff shows the ascending scale: F#4, G4, A4, B4, C#5, D5, E5, F#5. The second staff shows the descending scale: F#5, E5, D5, C#5, B4, A4, G4, F#4.

C# Melodic Minor

Musical notation for the C# Melodic Minor scale, consisting of one staff. The ascending scale is: C#4, D4, E4, F#4, G#4, A4, B4, C#5. The descending scale is: C#5, B4, A4, G#4, F#4, E4, D4, C#4.

G# Melodic Minor

Musical notation for the G# Melodic Minor scale, consisting of two staves. The first staff shows the ascending scale: G#4, A4, B4, C#5, D5, E5, F#5, G#5. The second staff shows the descending scale: G#5, F#5, E5, D5, C#5, B4, A4, G#4.

A \flat Melodic Minor

Musical notation for the A \flat Melodic Minor scale, consisting of two staves. The first staff shows the ascending scale: A \flat 4, B \flat 4, C \flat 5, D \flat 5, E \flat 5, F \flat 5, G \flat 5. The second staff shows the descending scale: G \flat 5, F \flat 5, E \flat 5, D \flat 5, C \flat 5, B \flat 4, A \flat 4.

D# Melodic Minor

Musical notation for the D# Melodic Minor scale, consisting of one staff. The ascending scale is: D#4, E4, F#4, G#4, A4, B4, C#5, D#5. The descending scale is: D#5, C#5, B4, A4, G#4, F#4, E4, D#4.

E \flat Melodic Minor

Musical notation for the E \flat Melodic Minor scale, consisting of one staff. The ascending scale is: E \flat 4, F \flat 4, G \flat 4, A \flat 4, B \flat 4, C \flat 5, D \flat 5, E \flat 5. The descending scale is: E \flat 5, D \flat 5, C \flat 5, B \flat 4, A \flat 4, G \flat 4, F \flat 4, E \flat 4.

A# Melodic Minor**Bb Melodic Minor****F Melodic Minor****C Melodic Minor****G Melodic Minor****D Melodic Minor**