

MISSOURI BANDMASTERS ASSOCIATION

MISSOURI ALL-STATE BAND AUDITION MATERIALS

TREBLE CLEF BARITONE Sets II, III, IV

Scale: All scales are to be MEMORIZED.
 Prepare them all slurred and tongued in sixteenth notes at quarter note = 88.
 Scales should be performed ascending and descending. Scales given are the starting tone. DO NOT TRANSPOSE.

All scales are to be prepared from required scale sheet as written.

Chromatic: Perform the chromatic exactly as written.

Major Scales: C G D A E B/Cb F#/Gb C#/Db Ab Eb Bb F

Minor Scales: a e b f# c# g#/ab d#/eb a#/bb f c g d

Books: *Arban Complete Conservatory Method for Trumpet, #021 – Goldman (edited)/*
Carl Fischer Publication

Set I (2020-21)	Arban	p. 22 p. 46-47 p. 125	#48 #28 – all #1 – lines 5, 11, & 13 (E, Bb, C)
		p. 190 p. 205 p. 290	#142 #53 #6 – first 6 lines (to key change)

Set II (2021-22)	Arban	p. 22 p. 33 p. 56 p. 189 p. 293 p. 328	#49 #31 #69 – lines 2, 10, & 12 (F, A, G) #139 #9 – first 5 lines Andante Moderato – first 6 lines
---------------------	-------	---	---

Set III (2022-23)	Arban	p. 22 p. 47 p. 125 p. 190 p. 301 p. 309	#50 #29 - all #1 – lines 3, 8, & 12 (D, G, B) #143 #1 – lines 9, 10, 11, & 12 #3 - first 11 lines
----------------------	-------	--	--

Set IV (2023-24)	Arban	p. 21 p. 24 p. 56 p. 189 p. 285 p. 313	#47 #9 #69 – lines 3, 9, & 11 (Bb, E, D) #138 #1 – first 7 lines (to key change) #4 – lines 6, 7, & 8
---------------------	-------	---	--



MISSOURI ALL-STATE-BAND AUDITION SCALES

to be played at a minimum tempo of quarter note = 88

Treble Clef Baritone

Chromatic Scale

Musical notation for the Chromatic Scale, consisting of two staves. The first staff shows the ascending scale from C4 to C5, and the second staff shows the descending scale from C5 to C4. The notes are: C, C#, D, D#, E, E#, F, F#, G, G#, A, A#, B, B#, C.

Missouri ASB Major Scales

C Major Scale

Musical notation for the C Major Scale, consisting of one staff. The notes are: C, D, E, F, G, A, B, C, B, A, G, F, E, D, C.

G Major Scale

Musical notation for the G Major Scale, consisting of one staff. The notes are: G, A, B, C, D, E, F#, G, F#, E, D, C, B, A, G.

D Major Scale

Musical notation for the D Major Scale, consisting of one staff. The notes are: D, E, F#, G, A, B, C, D, C, B, A, G, F#, E, D.

A Major Scale

Musical notation for the A Major Scale, consisting of one staff. The notes are: A, B, C, D, E, F#, G, A, G, F#, E, D, C, B, A.

E Major Scale

Musical notation for the E Major Scale, consisting of one staff. The notes are: E, F#, G, A, B, C, D, E, D, C, B, A, G, F#, E.

B Major Scale



Cb Major Scale



F# Major Scale



Gb Major Scale



C# Major Scale



Db Major Scale



Ab Major Scale



Eb Major Scale



Bb Major Scale



F Major Scale

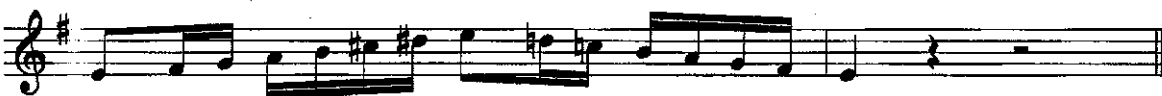


Missouri ASB Melodic Minor Scales

A Melodic Minor



E Melodic Minor



B Melodic Minor

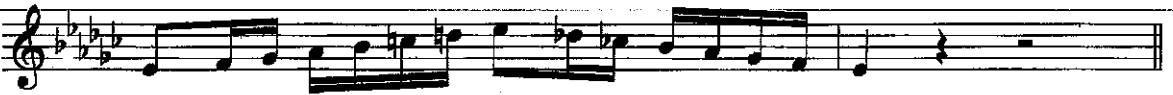


F# Melodic Minor



C# Melodic Minor



G# Melodic Minor**Ab Melodic Minor****D# Melodic Minor****Eb Melodic Minor****A# Melodic Minor****Bb Melodic Minor****F Melodic Minor****C Melodic Minor**

G Melodic Minor



D Melodic Minor

