

MISSOURI BANDMASTERS ASSOCIATION

MISSOURI ALL-STATE BAND AUDITION MATERIALS

BASS CLEF BARITONE

Sets II, III, IV

Scale: All scales are to be MEMORIZED.

Prepare them all slurred and tongued in sixteenth notes at quarter note = 88.
Scales should be performed ascending and descending. Scales given are the starting tone. DO NOT TRANSPOSE.

All scales are to be prepared from required scale sheet as written.

Chromatic: Perform the chromatic exactly as written.

Major Scales: C G D A E B/Cb F#/Gb C#/Db Ab Eb Bb F

Minor Scales: a e b f# c# g#/ab d#/cb a#/bb f c g d

Books: *Arban Complete Conservatory Method for Trombone, #023 – Mantia (edited)/
Carl Fischer Publication*

Set I (2020-21)	Arban	p. 29	#48
		p. 52	#28
		p. 126	#1 – lines 1, 5, & 11 (Bb, D, Ab)
		p. 202	#142
		p. 211	#6 – first 7 lines (to key change)
		p. 252	#10 – first 5 lines
<hr/>			
Set II (2021-22)	Arban	p. 29	#49
		p. 40	#31
		p. 61	#69 – lines 2, 10, & 12 (Eb, G, F)
		p. 201	#139
		p. 215	#9 – first 6 lines
		p. 244	#7 – lines 8, 9, 10, 11, & 12
<hr/>			
Set III (2022-23)	Arban	p. 29	#50
		p. 52	#29
		p. 126	#1 – lines 3, 8, & 12 (C, F, A)
		p. 202	#143
		p. 231	#3 – first 8 lines
		p. 225	#1 – lines 8, 9, & 10 (observe repeat)
<hr/>			
Set IV (2023-24)	Arban	p. 28	#47
		p. 31	#9
		p. 61	#69 – lines 3, 9, & 11 (Ab,D,C)
		p. 201	#138
		p. 204	#1 – first 8 lines (to key change)
		p. 236	#5 – lines 5, 6, 7, & 8



MISSOURI ALL-STATE-BAND AUDITION SCALES

to be played at a minimum tempo of quarter note = 88

Euphonium
Bass Clef

Chromatic Scale

A musical score for a chromatic scale in bass clef, 4/4 time. The scale consists of two lines of music. The first line starts on C2 and ascends chromatically through all 12 semitones to B2. The second line starts on B1 and descends chromatically through all 12 semitones to C1. Each note is marked with a sharp or flat sign to indicate its chromatic position.

Missouri ASB Major Scales

C Major Scale

A musical score for the C Major scale in bass clef, 4/4 time. The scale is written on a single staff, starting on C2 and ascending to C3, then descending back to C2. The notes are C, D, E, F, G, A, B, A, G, F, E, D, C.

G Major Scale

A musical score for the G Major scale in bass clef, 4/4 time. The key signature has one sharp (F#). The scale is written on a single staff, starting on G2 and ascending to G3, then descending back to G2. The notes are G, A, B, C, D, E, F#, E, D, C, B, A, G.

D Major Scale

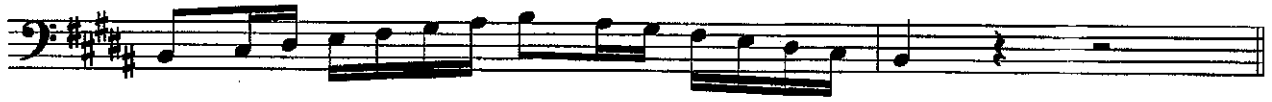
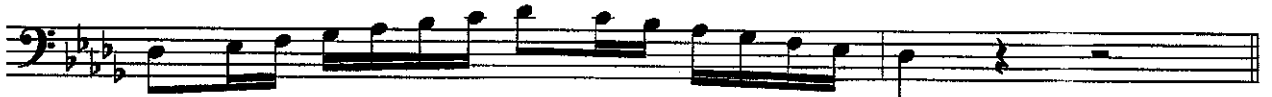
A musical score for the D Major scale in bass clef, 4/4 time. The key signature has two sharps (F# and C#). The scale is written on a single staff, starting on D2 and ascending to D3, then descending back to D2. The notes are D, E, F#, G, A, B, C#, B, A, G, F#, E, D.

A Major Scale

A musical score for the A Major scale in bass clef, 4/4 time. The key signature has three sharps (F#, C#, and G#). The scale is written on a single staff, starting on A2 and ascending to A3, then descending back to A2. The notes are A, B, C#, D, E, F#, G#, F#, E, D, C#, B, A.

E Major Scale

A musical score for the E Major scale in bass clef, 4/4 time. The key signature has four sharps (F#, C#, G#, and D#). The scale is written on a single staff, starting on E2 and ascending to E3, then descending back to E2. The notes are E, F#, G#, A, B, C#, D#, C#, B, A, G#, F#, E.

B Major Scale**Cb Major Scale****F# Major Scale****Gb Major Scale****C# Major Scale****Db Major Scale****Ab Major Scale****Eb Major Scale**

Bb Major Scale



F Major Scale



Missouri ASB Melodic Minor Scales

A Melodic Minor



E Melodic Minor



B Melodic Minor



F# Melodic Minor



C# Melodic Minor



G# Melodic Minor

Musical notation for the G# Melodic Minor scale in bass clef. The scale is written in a single line, starting on G#2 and ascending to G#5, then descending to G#2. The notes are G#, A, B, C, D, E, F#, G#, A, B, C, D, E, F#, G#. There are 'x' marks above the notes C, D, E, and F#.

A^b Melodic Minor

Musical notation for the A^b Melodic Minor scale in bass clef. The scale is written in a single line, starting on A^b2 and ascending to A^b5, then descending to A^b2. The notes are A^b, B^b, C, D, E, F, G, A^b, B^b, C, D, E, F, G, A^b.

D# Melodic Minor

Musical notation for the D# Melodic Minor scale in bass clef. The scale is written in a single line, starting on D#2 and ascending to D#5, then descending to D#2. The notes are D#, E, F, G, A, B, C, D#, E, F, G, A, B, C, D#. There are 'x' marks above the notes F, G, and A.

E^b Melodic Minor

Musical notation for the E^b Melodic Minor scale in bass clef. The scale is written in a single line, starting on E^b2 and ascending to E^b5, then descending to E^b2. The notes are E^b, F, G, A, B, C, D, E^b, F, G, A, B, C, D, E^b.

A# Melodic Minor

Musical notation for the A# Melodic Minor scale in bass clef. The scale is written in a single line, starting on A#2 and ascending to A#5, then descending to A#2. The notes are A#, B, C, D, E, F, G, A#, B, C, D, E, F, G, A#. There are 'x' marks above the notes C, D, and E.

B^b Melodic Minor

Musical notation for the B^b Melodic Minor scale in bass clef. The scale is written in a single line, starting on B^b2 and ascending to B^b5, then descending to B^b2. The notes are B^b, C, D, E, F, G, A, B^b, C, D, E, F, G, A, B^b.

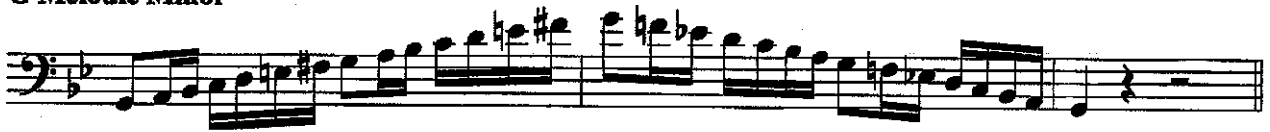
F Melodic Minor

Musical notation for the F Melodic Minor scale in bass clef. The scale is written in a single line, starting on F2 and ascending to F5, then descending to F2. The notes are F, G, A, B, C, D, E, F, G, A, B, C, D, E, F.

C Melodic Minor

Musical notation for the C Melodic Minor scale in bass clef. The scale is written in a single line, starting on C2 and ascending to C5, then descending to C2. The notes are C, D, E, F, G, A, B, C, D, E, F, G, A, B, C.

G Melodic Minor



D Melodic Minor

