

MISSOURI BANDMASTERS ASSOCIATION MISSOURI ALL-STATE BAND AUDITION MATERIALS

TRUMPET & CORNET

Sets II, III, IV

Scale: All scales are to be MEMORIZED.
Prepare them all slurred and tongued in sixteenth notes at quarter note = 88.
Scales should be performed ascending and descending. Scales given are the starting tone. DO NOT TRANSPOSE.

All scales are to be prepared from required scale sheet as written.

Chromatic: Perform the chromatic exactly as written.

Major Scales: C G D A E B/Cb F#/Gb C#/Db Ab Eb Bb F

Minor Scales: a e b f# c# g#/ab d#/eb a#/bb f c g d

Books: *Arban Complete Conservatory Method for Trumpet, #021 – Goldman (edited)/
Carl Fischer Publication*

Set I (2020-21)	Arban	p. 21 p. 24 p. 56	#47 #9 #69 – lines 3, 9, & 11 (Bb, E, D)
		p. 189 p. 221 p. 285	#138 #102 #1 – first 7 lines (to key change)

Set II (2021-22)	Arban	p. 22 p. 46-47 p. 125 p. 190 p. 205 p. 290	#48 #28 – all #1 – lines 5, 11, & 13 (E, Bb, C) #142 #53 #6 – first 6 lines (to key change)
---------------------	-------	---	--

Set III (2022-23)	Arban	p. 22 p. 33 p. 56 p. 189 p. 206 p. 293	#49 #31 #69 – lines 2, 10, & 12 (F, A, G) #139 #57 #9 – first 5 lines
----------------------	-------	---	--

Set IV (2023-24)	Arban	p. 22 p. 47 p. 125 p. 190 p. 213 p. 287	#50 #29 – all #1 – lines 3, 8, & 12 (D, G, B) #143 #76 #3 – first 7 lines (to key change)
---------------------	-------	--	--



MISSOURI ALL-STATE-BAND AUDITION SCALES

to be played at a minimum tempo of quarter note = 88

Trumpet

Chromatic Scale

Musical notation for the Chromatic Scale, consisting of two staves. The first staff shows the ascending scale from C4 to C5 with accidentals. The second staff shows the descending scale from C5 to C4 with accidentals.

Missouri ASB Major Scales

C Major Scale

Musical notation for the C Major Scale, consisting of one staff with a treble clef and a 4/4 time signature. The scale is written in eighth notes.

G Major Scale

Musical notation for the G Major Scale, consisting of one staff with a treble clef and a key signature of one sharp (F#). The scale is written in eighth notes.

D Major Scale

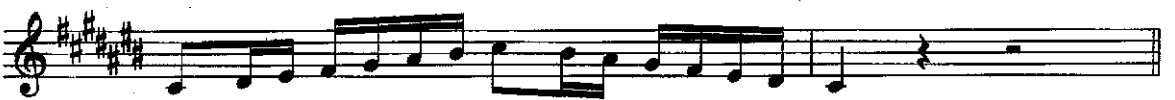
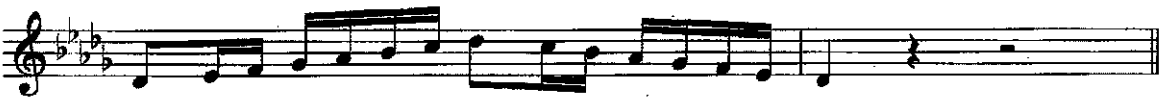
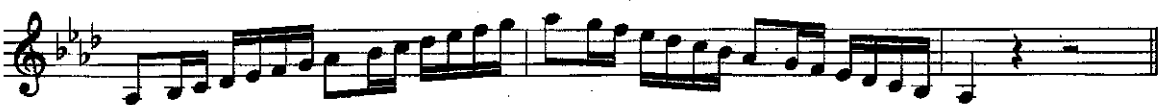
Musical notation for the D Major Scale, consisting of one staff with a treble clef and a key signature of two sharps (F# and C#). The scale is written in eighth notes.

A Major Scale

Musical notation for the A Major Scale, consisting of one staff with a treble clef and a key signature of three sharps (F#, C#, and G#). The scale is written in eighth notes.

E Major Scale

Musical notation for the E Major Scale, consisting of one staff with a treble clef and a key signature of four sharps (F#, C#, G#, and D#). The scale is written in eighth notes.

B Major Scale**Cb Major Scale****F# Major Scale****Gb Major Scale****C# Major Scale****Db Major Scale****Ab Major Scale****Eb Major Scale**

Bb Major Scale



F Major Scale

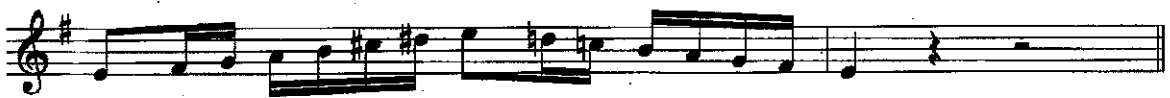


Missouri ASB Melodic Minor Scales

A Melodic Minor



E Melodic Minor



B Melodic Minor

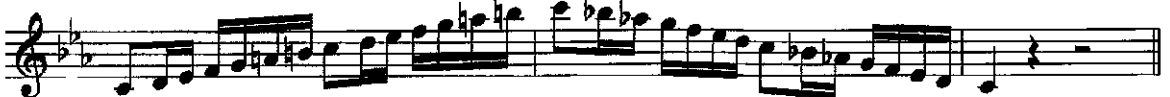


F# Melodic Minor

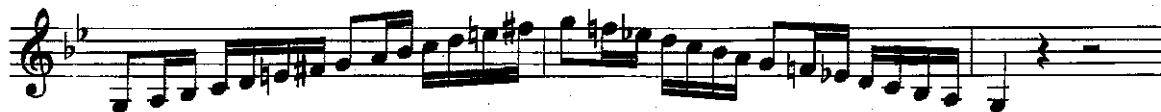


C# Melodic Minor



G# Melodic Minor**A \flat Melodic Minor****D# Melodic Minor****E \flat Melodic Minor****A# Melodic Minor****B \flat Melodic Minor****F Melodic Minor****C Melodic Minor**

G Melodic Minor



D Melodic Minor

