

# MISSOURI BANDMASTERS ASSOCIATION

## MISSOURI ALL-STATE BAND AUDITION MATERIALS

BARITONE SAXOPHONE                      Sets II, III, IV

Scale: All scales are to be MEMORIZED.  
 Prepare them all slurred and tongued in sixteenth notes at quarter note = 88.  
 Scales should be performed ascending and descending. Scales given are the  
 starting tone. DO NOT TRANSPOSE.

All scales are to be prepared from required scale sheet as written.

Chromatic: Perform the chromatic exactly as written.

Major Scales: C G D A E B/Cb F#/Gb C#/Db Ab Eb Bb F

Minor Scales: a e b f# c# g#/ab d#/eb a#/bb f c g d

Books: *Selected Studies for Saxophone – Voxman/Rubank Publication*

*Universal-Prescott, 1<sup>st</sup> and 2<sup>nd</sup> Year – Carl Fischer Publication*

Set I (2020-21)	Selected Studies	p. 5	Mod. Assai
		p. 7	all
	Universal-Prescott	p. 44	#88
		p. 210	#16
		p. 210	#17
		p. 213	#11
		p. 214	lines 7, 8, 9, & 10

Set II (2021-22)	Selected Studies	p. 8	Andante
		p. 15	Vivace
	Universal-Prescott	p. 44	#86
		p. 210	#15
		p. 210	#18
		p. 212	#3
		p. 214	lines 4, 5, & 6

Set III (2022-23)	Selected Studies	p. 3	all
		p. 6	all
	Universal-Prescott	p. 42	#78
		p. 208	#4
		p. 209	#12
		p. 212	#6
		p. 214	lines 1, 2, & 3

Set IV (2023-24)	Selected Studies	p. 9	all
		p. 29	all
	Selected Studies	p. 42	#79
		p. 209	#8
		p. 209	#9
		p. 212	#4
		p. 214	last 3 lines



# MISSOURI ALL-STATE-BAND AUDITION SCALES

to be played at a minimum tempo of quarter note = 88

Saxophones

## Chromatic Scale

Two staves of musical notation for a chromatic scale. The first staff shows the ascending scale from C4 to C5, and the second staff shows the descending scale from C5 to C4. The notes are: C, C#, D, D#, E, E#, F, F#, G, G#, A, A#, B, B#, C.

## Missouri ASB Major Scales

### C Major Scale

Musical notation for the C Major Scale, ascending and descending on a single staff.

### G Major Scale

Musical notation for the G Major Scale, ascending and descending on a single staff.

### D Major Scale

Musical notation for the D Major Scale, ascending and descending on a single staff.

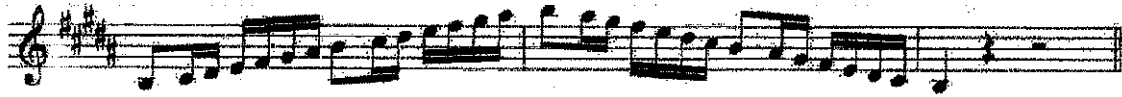
### A Major Scale

Musical notation for the A Major Scale, ascending and descending on a single staff.

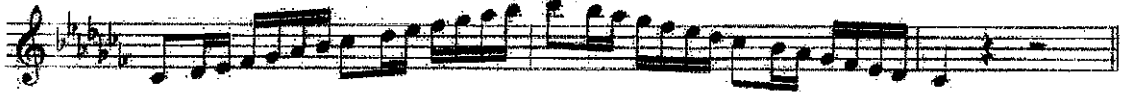
### E Major Scale

Musical notation for the E Major Scale, ascending and descending on a single staff.

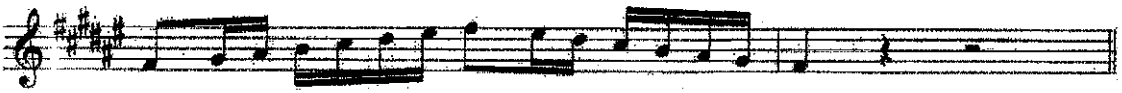
**B Major Scale**



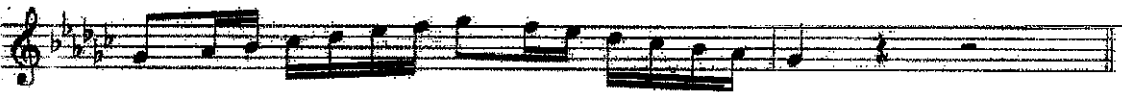
**Cb Major Scale**



**F# Major Scale**



**Gb major Scale**



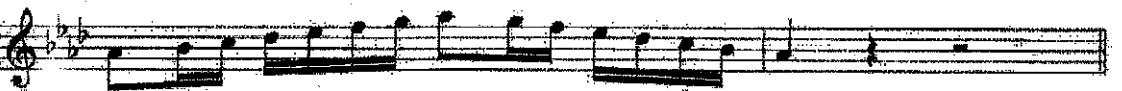
**C# Major Scale**



**Db Major Scale**



**Ab Major Scale**



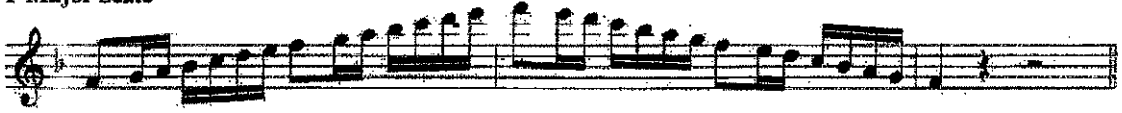
**Eb Major Scale**



**Bb Major Scale**



**F Major Scale**



**Missouri ASB Melodic Minor Scales**

**A Melodic Minor**



**E Melodic Minor**



**B Melodic Minor**



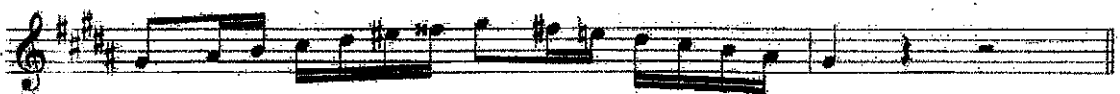
**F# Melodic Minor**



**C# Melodic Minor**



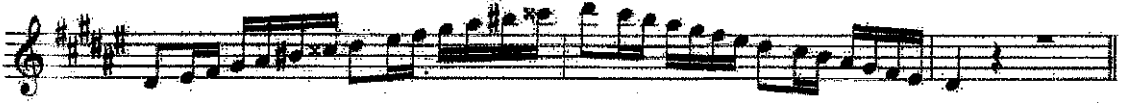
**G# Melodic Minor**



**Ab Melodic Minor**



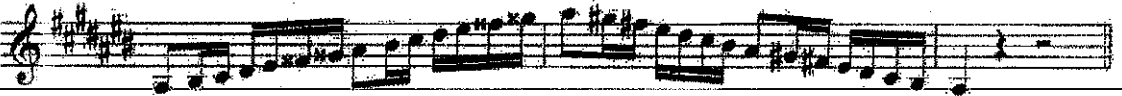
**D# Melodic Minor**



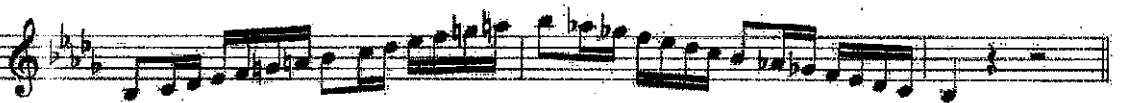
**Eb Melodic Minor**



**A# Melodic Minor**



**Bb Melodic Minor**



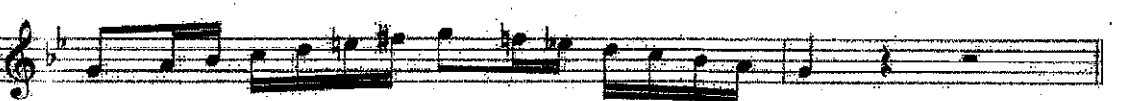
**F Melodic Minor**



**C Melodic Minor**



**G Melodic Minor**



**D Melodic Minor**

