

MISSOURI BANDMASTERS ASSOCIATION MISSOURI ALL-STATE BAND AUDITION MATERIALS

Bb BASS CLARINET

Sets II, III, IV

Scale: All scales are to be MEMORIZED.

Prepare them all slurred and tongued in sixteenth notes at quarter note = 88.
Scales should be performed ascending and descending. Scales given are the starting tone. DO NOT TRANSPOSE.

All scales are to be prepared from required scale sheet as written.

Chromatic: Perform the chromatic exactly as written.

Major Scales: C G D A E B/Cb F#/Gb C#/Db Ab Eb Bb F

Minor Scales: a e b f# c# g#/ab d#/eb a#/bb f c g d

Books: *21 Foundation Studies for Alto and Bass Clarinet – Wm. Rhoads/Southern Pub.*

(Older edition of this book = page number different by minus 2)

Introducing the Alto or Bass Clarinet – Voxman/Rubank Publication

Set I (2020-21)	21 Foundation Studies	p. 29	#19
--------------------	-----------------------	-------	-----

Introducing	p. 14	#5
	p. 22	#3
	p. 24	#3
	p. 36	#5

Set II (2021-22)	21 Foundation Studies	p. 32	#21
---------------------	-----------------------	-------	-----

Introducing	p. 9	#4
	p. 17	#5
	p. 26-27	#5
	p. 37	#3

Set III (2022-23)	21 Foundation Studies	p. 21	#13
----------------------	-----------------------	-------	-----

Introducing	p. 11	#1
	p. 12	#5
	p. 15	#4
	p. 42	Pastorale

Set IV (2023-24)	21 Foundation Studies	p. 16	#9
---------------------	-----------------------	-------	----

Introducing	p. 13	#5
	p. 16	#5
	p. 20	#6
	p. 36	#2 slurred



MISSOURI ALL-STATE-BAND AUDITION SCALES

to be played at a minimum tempo of quarter note = 88

Bb Bass Clarinet

Chromatic Scale

The chromatic scale is presented in three staves. The first staff shows the ascending scale from C2 to C3. The second staff shows the descending scale from C3 to C2. The third staff shows the ascending scale from C3 to C4. The notation uses a treble clef and a key signature of one flat (Bb).

Missouri ASB Major Scales

C Major Scale

The C Major scale is written on a single staff in treble clef with a 4/4 time signature. It consists of a single line of music showing the ascending and descending scales.

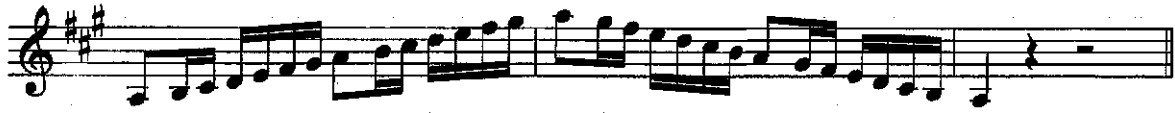
G Major Scale

The G Major scale is written on a single staff in treble clef with a 4/4 time signature. It consists of a single line of music showing the ascending and descending scales.

D Major Scale

The D Major scale is written on a single staff in treble clef with a 4/4 time signature. It consists of a single line of music showing the ascending and descending scales.

A Major Scale



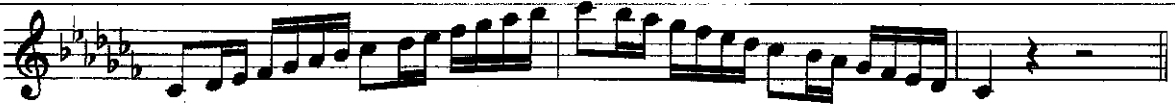
E Major Scale



B Major Scale



Cb Major Scale



F# Major Scale



Gb Major



C# Major Scale



Db Major Scale



Ab Major Scale



Eb Major Scale



Bb Major Scale



F Major Scale



Missouri ASB Melodic Minor Scales

A Melodic Minor



E Melodic Minor



B Melodic Minor**F# Melodic Minor****C# Melodic Minor****G# Melodic Minor****A \flat Melodic Minor****D# Melodic Minor****E \flat Melodic Minor**

A# Melodic Minor

Musical notation for the A# Melodic Minor scale in treble clef. The key signature has four sharps (F#, C#, G#, D#). The scale consists of two lines of eighth notes: the first line is A#4, B4, C#5, D#5, E6, F#6, G#6, A6; the second line is G#6, F#6, E6, D#5, C#5, B4, A#4. The scale ends with a whole rest on the A#4 note.

Bb Melodic Minor

Musical notation for the Bb Melodic Minor scale in treble clef. The key signature has two flats (Bb, Eb). The scale consists of two lines of eighth notes: the first line is Bb4, C5, D5, Eb5, F5, G5, Ab5, Bb5; the second line is Ab5, G5, F5, Eb5, D5, C5, Bb4. The scale ends with a whole rest on the Bb4 note.

F Melodic Minor

Musical notation for the F Melodic Minor scale in treble clef. The key signature has two flats (Bb, Eb). The scale consists of two lines of eighth notes: the first line is F4, G4, Ab4, Bb4, C5, D5, Eb5, F5; the second line is Eb5, D5, C5, Bb4, Ab4, G4, F4. The scale ends with a whole rest on the F4 note.

C Melodic Minor

Musical notation for the C Melodic Minor scale in treble clef. The key signature has no sharps or flats. The scale consists of two lines of eighth notes: the first line is C4, D4, Eb4, F4, G4, Ab4, Bb4, C5; the second line is Bb4, Ab4, G4, F4, Eb4, D4, C4. The scale ends with a whole rest on the C4 note.

G Melodic Minor

Musical notation for the G Melodic Minor scale in treble clef. The key signature has one flat (F). The scale consists of two lines of eighth notes: the first line is G4, A4, Bb4, C5, D5, Eb5, F5, G5; the second line is F5, Eb5, D5, C5, Bb4, A4, G4. The scale ends with a whole rest on the G4 note.

D Melodic Minor

Musical notation for the D Melodic Minor scale in treble clef. The key signature has two flats (Bb, Eb). The scale consists of two lines of eighth notes: the first line is D4, E4, F4, G4, Ab4, Bb4, C5, D5; the second line is C5, Bb4, Ab4, G4, F4, E4, D4. The scale ends with a whole rest on the D4 note.