

# MISSOURI BANDMASTERS ASSOCIATION

## MISSOURI ALL-STATE BAND AUDITION MATERIALS

BASSOON                      Sets II, III, IV

Scale: All scales are to be MEMORIZED.  
 Prepare them all slurred and tongued in sixteenth notes at quarter note = 88.  
 Scales should be performed ascending and descending. Scales given are the  
 starting tone. DO NOT TRANSPOSE.

**All scales are to be prepared from required scale sheet as written.**

Chromatic: Perform the chromatic exactly as written.

Major Scales: C G D A E B/Cb F#/Gb C#/Db Ab Eb Bb F

Minor Scales: a e b f# c# g#/ab d#/eb a#/bb f c g d

Books: Practical Method for Bassoon – Julius Weissenborn/Carl Fischer Publication

Set I Practical Method (2020-2021)	p. 35 p. 43 p. 69 p. 81 p. 86	Allegro – first 3 lines first 4 lines #5 #2 #12 – first page only
---------------------------------------	---	---

Set II Practical Method (2021-2022)	p. 30 p. 40 p. 66 p. 82-83 p. 86	Allegro Moderato – lines 3, 4, 5, & 6 Poco Allegro – first 4 lines #2 #5 #11
--	--	--

Set III Practical Method (2022-2023)	p. 41 p. 45 p. 62 p. 67 p. 81	Allegretto – lines 7, 8, 9, & 10 Allegro – lines 7, 8, 9, & 10 lines 1, 2, 3, & 4 #11 #1
---	---	--

Set IV Practical Method (2023-2024)	p. 31 p. 37 p. 47 p. 67 p. 82	Andante – lines 8, 9, & 10 Andante – lines 2, 3, 4, 5, & 6 Marcia – lines 7, 8, 9, & 10 #10 #4
--	---	--



# MISSOURI ALL-STATE-BAND AUDITION SCALES

to be played at a minimum tempo of quarter note = 88

Bassoon

## Chromatic Scale

## Chromatic Scale

The chromatic scale is presented in three staves of music. The first staff shows the ascending scale from C2 to C3. The second staff shows the descending scale from C3 to C2. The third staff shows the ascending scale from C3 to C4. The notes are written in bass clef with a 4/4 time signature. The first two staves are in C major, and the third is in C minor.

## Missouri ASB Major Scales

### C Major Scale

The C Major Scale is written in bass clef with a 4/4 time signature. It consists of a single staff of music showing the ascending and descending scales.

### G Major Scale

The G Major Scale is written in bass clef with a 4/4 time signature. It consists of a single staff of music showing the ascending and descending scales.

### D Major Scale

The D Major Scale is written in bass clef with a 4/4 time signature. It consists of a single staff of music showing the ascending and descending scales.

### A Major Scale

The A Major Scale is written in bass clef with a 4/4 time signature. It consists of a single staff of music showing the ascending and descending scales.

**E Major Scale**



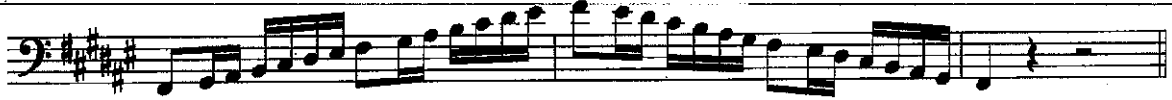
**B Major Scale**



**Cb Major Scale**



**F# Major Scale**



**Gb major Scale**



**C# Major Scale**



**Db Major Scale**



**Ab Major Scale**



**E $\flat$  Major Scale**



**B $\flat$  Major Scale**



**F Major Scale**



**A Melodic Minor**



Missouri ASB Melodic Minor Scales

**E Melodic Minor**



**B Melodic Minor**



**F# Melodic Minor**



**C# Melodic Minor**



**G# Melodic Minor**



**A $\flat$  Melodic Minor**



**D# Melodic Minor**



**E $\flat$  Melodic Minor**



**A# Melodic Minor**



**Bb Melodic Minor**

Two staves of musical notation for the Bb Melodic Minor scale. The first staff shows the ascending scale from Bb2 to Bb6. The second staff shows the descending scale from Bb6 to Bb2. The key signature has two flats (Bb and Eb).

**F Melodic Minor**

Two staves of musical notation for the F Melodic Minor scale. The first staff shows the ascending scale from F2 to F6. The second staff shows the descending scale from F6 to F2. The key signature has one flat (F).

**C Melodic Minor**

Two staves of musical notation for the C Melodic Minor scale. The first staff shows the ascending scale from C2 to C6. The second staff shows the descending scale from C6 to C2. The key signature has no flats or sharps.

**G Melodic Minor**

Two staves of musical notation for the G Melodic Minor scale. The first staff shows the ascending scale from G2 to G6. The second staff shows the descending scale from G6 to G2. The key signature has one sharp (F#).

**D Melodic Minor**

Two staves of musical notation for the D Melodic Minor scale. The first staff shows the ascending scale from D2 to D6. The second staff shows the descending scale from D6 to D2. The key signature has two sharps (F# and C#).