

In loving memory of Larry Pohlman, whose vision and dedication led to the founding of the Missouri All-State Band.



## Oboe Set 3

### **Audition Repertoire:**

**All scales to be performed at a minimum of ♩=88 and prepared slurred and tongued.**

Chromatic Scale - ♩=88

Major Scales - ♩=88

Melodic Minor Scales - ♩=88

Etude #1 - Adagio con espressione, ♩=92

Etude #2 - Vivace, ♩=88

Etude #3 - Andante un poco rubato, ♩=132

Etude #4 - Allegro Vivace, ♩=80



## Chromatic Scale

♩ = 88

Two staves of musical notation for a chromatic scale. The first staff shows the ascending scale from C4 to C5, and the second staff shows the descending scale from C5 to C4. The tempo is marked as ♩ = 88.

♩ = 88

## Major Scales

C Major

Staff of musical notation for the C Major scale, ascending and descending.

F Major

Staff of musical notation for the F Major scale, ascending and descending.

Bb Major

Staff of musical notation for the Bb Major scale, ascending and descending.

Eb Major

Staff of musical notation for the Eb Major scale, ascending and descending.

Ab Major

Staff of musical notation for the Ab Major scale, ascending and descending.

Db Major

Staff of musical notation for the Db Major scale, ascending and descending.

Gb Major

Staff of musical notation for the Gb Major scale, ascending and descending.



Cb Major

C# Major

F# Major

B Major

E Major

A Major

D Major

G Major

♩ = 88

### Melodic Minor Scales

A Melodic Minor

D Melodic Minor

G Melodic Minor

C Melodic Minor



## F Melodic Minor



## Bb Melodic Minor



## Eb Melodic Minor



## Ab Melodic Minor



## A# Melodic Minor



## D# Melodic Minor



## G# Melodic Minor



## C# Melodic Minor



## F# Melodic Minor



## B Melodic Minor



## E Melodic Minor





In the following etudes and excerpts, **Prioritize** intonation, tone and rhythm over tempo.

### Etude #1

Adagio con espressione ♩ = 92

1 2 3 4 5

6 7 8 9 10

11 12 13 14 15 \*1: See Appendix

16 17 18 19 20

21 22 23 24

25 26 27 28

*p* *pp* *cresc.* *f* *espr.* *cresc.* *p* *pp* *f sempre* *p subito* *p* *f* *f* *ad lib.* *pp* *molto rit.*

### Etude #2

Vivace ♩ = 88

1 2 3 4

5 6 7 8

9 10 11 12

13 14 15 16

*f* *f* *f* *pp*



Andante un poco rubato ♩ = 132

# Etude #3

44 45 46 47 48 49

*p* *piu f* *poco a poco cresc.....*

50 51 52 53 54 55

*mf* *cresc.....* *un poco string*

56 57 58 59 60 61

*f* *sempre cresc.....* *ff*

62 63 64 65 66 67

*marcatiss.* *Ritenuato* *fff*

# Etude #4

1 Allegro vivace. ♩ = 80 2 3 4 5 6

*ff*

7 8 9 8 18 19

*p espress.*

20 21 22 23 24

25 26 27 28 29 4

34 35 36 37 38 39

*p* 40 41 42 43 44 45 4

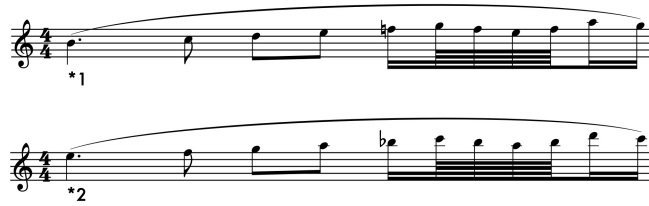
*sfz dim. molto.....* 46-49

50 51 52 53 54 55

*ff* *p* 56 57 58 59 60

61 62 63 64 65

*p*



Etude #1: 48 Famous Studies, No. 1 - W. Ferling

Etude #2: 48 Famous Studies, No. 18 - W. Ferling, mm. 1-16

Etude #3: Capriccio Italienne, Op. 45 - Tchaikovsky, mm. 43-67

Etude #4: Carmen Suite No. 1, Aragonaise - Georges Bizet, mm. 1-64

MBA gratefully recognizes the contributions of Brad Heckman and Joey Carter in preparing the audition materials, as well as the leadership of President-Elect Julie Swope in coordinating their development.

Their dedication, effort, and collaboration are sincerely appreciated.